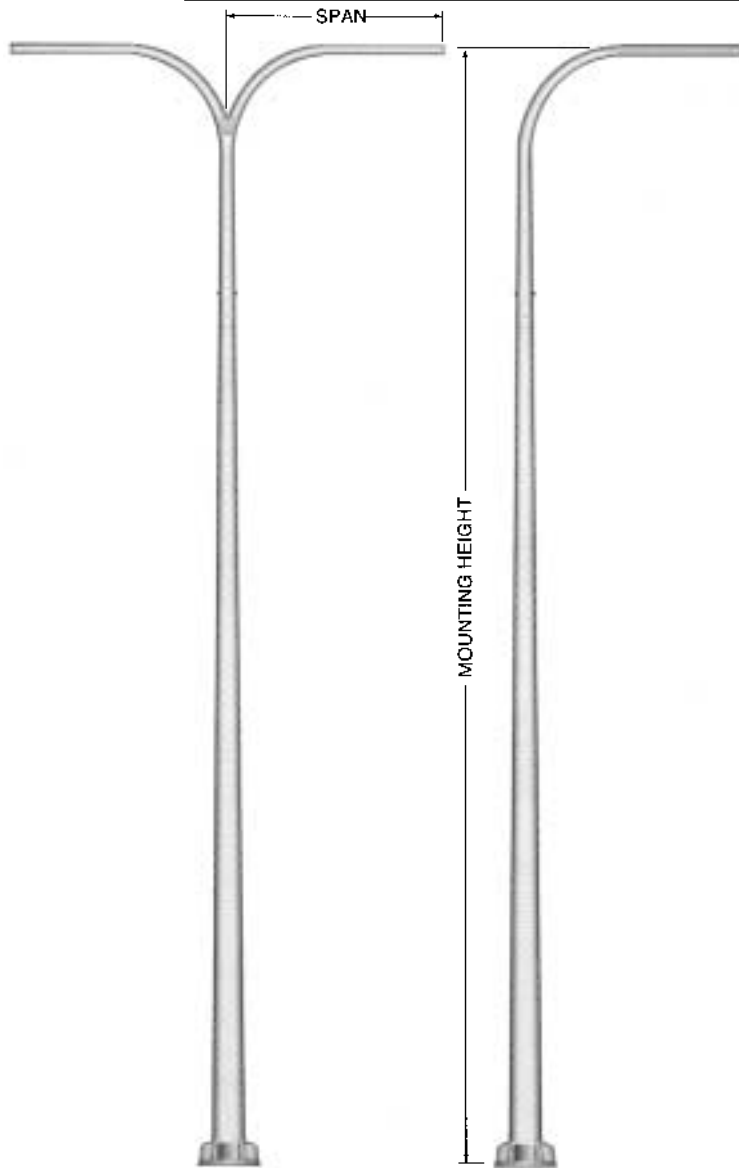


## 6' Tapered Aluminum Davit Arm Pole



### SPECIFICATIONS

The davit arm member is conically tapered from either 4", 4-1/2" or 6" O.D. x .188" wall 6063 alloy extruded aluminum tube. The fixture end of each arm shall be a 2-3/8" O.D. (2" pipe size) tenon. Pole davit arm members have a 6' 6" rise and are available in 4' spans. The davit arm slip fits onto a specially tapered pole top tenon where it is fastened with (2) stainless steel 5/8"-11 UNC through bolts. A 2" I.D. rubber grommet is included for each double davit arm.

The shaft shall be polished with fine grain aluminum oxide cloths, resulting in a high quality circumferential satin brushed finish. Additional architectural finishes available include natural anodized, duranodic and paint.

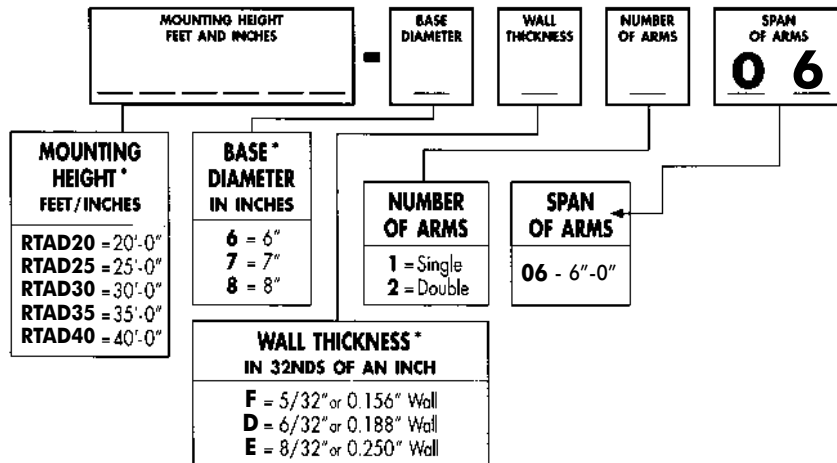
Unless otherwise directed, NAFCO will locate single davit arms 90° to the right of the handhole and double davit arms will be located 90° and 270° from the handhole.

A peripherally reinforced flush covered Handhole is centered 18" above the bottom of the shaft. The opening is 3" x 5" on a 6" diameter pole and 4" x 6" on 7", 8" and 10" diameter poles. An optional 4" x 8" opening is available for 8" and 10" diameter poles.

The anchor base is cast from A356 alloy aluminum and shall be heat treated to a T6 condition. The shaft shall be inserted into the anchor base casting and shall be joined by a continuous circumferential weld at the inside bottom of the shaft. Four pressure fit aluminum nut covers are provided with each anchor base.

Each davit arm pole includes: (4) anchor bolts with (2) nuts and (2) flat washers sized to match the anchor bolt.

### CATALOG LOGIC



\* For available Base Diameter, Wall Thickness and Length Combinations, see Dimensional Load Data table that follows.

*Serving our customers and the industry with quality products since 1973.*

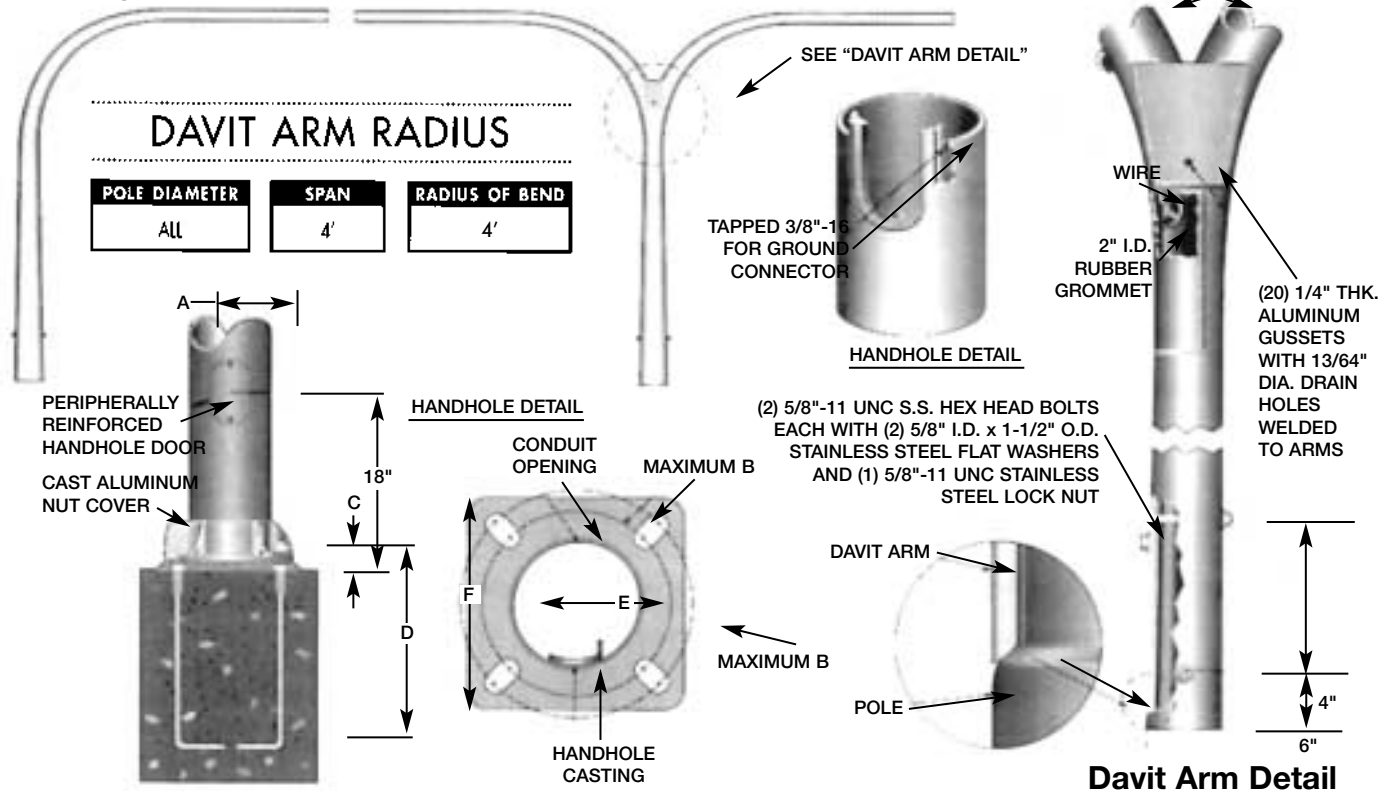
# 6' Tapered Aluminum Davit Arm Pole

## ANCHOR BASE AND BOLT DETAIL

A	B	C	D	E	F
POLE DIAMETER	BOLT CIRCLE	BOLT PROJECTION	BOLT SIZE	CONDUIT OPENING	BASE SIZE
6"	8-3/4" - 10-1/4"	3-1/2"	3/4" x 17"	5-1/2"	10-1/4"
7"	9-7/8" - 11-1/4"	4-1/8"	1" x 36"	6-1/2"	10-5/8"
8"	11" - 12-1/8"	4-1/4"	1" x 36"	7-1/2"	11-5/8"

### Single Davit Arm

### Double Davit Arm



6' FOOT SINGLE DAVIT ARM						
SPAN 72", RISE 78", FIXTURE SLIPFITTER 2-3/8" O.D.						
LUMINAIRE MOUNTING HEIGHT	MAXIMUM ALLOWABLE EFFECTIVE PROJECTED AREA PER ARM IN FT. <sup>2</sup>					DAVID ARM POLE MODEL NUMBER
	70 MPH	80 MPH	90 MPH	100 MPH	110 MPH	
20'	6.0	6.0	5.4	3.8	2.7	RTAD20-6F106
25'	6.0	4.3	2.6	1.4	0.6	RTAD25-6F106
25'	6.0	6.0	5.5	3.8	2.6	RTAD25-7F106
30'	3.7	1.6	—	—	—	RTAD30-6F106
30'	6.0	4.7	2.8	1.5	0.6	RTAD30-7F106
30'	6.0	6.0	5.6	3.8	2.5	RTAD30-8F106
35'	4.3	2.0	0.5	—	—	RTAD35-7F106
35'	6.0	4.9	2.9	1.6	0.6	RTAD35-8F106
35'	6.0	6.0	4.8	3.1	1.8	RTAD35-8D106
35'	6.0	6.0	6.0	5.9	4.2	RTAD35-8E106
40'	4.6	2.2	0.7	—	—	RTAD40-8F106
40'	6.0	4.2	2.3	1.0	—	RTAD40-8D106
40'	6.0	6.0	5.4	3.5	2.1	RTAD40-8E106

6' FOOT DOUBLE DAVIT ARM						
SPAN 72", RISE 78", FIXTURE SLIPFITTER 2-3/8" O.D.						
LUMINAIRE MOUNTING HEIGHT	MAXIMUM ALLOWABLE EFFECTIVE PROJECTED AREA PER ARM IN FT. <sup>2</sup>					DAVID ARM POLE MODEL NUMBER
	70 MPH	80 MPH	90 MPH	100 MPH	110 MPH	
20'	6.0	3.8	2.4	1.3	—	RTAD20-6F206
20'	7.1	6.7	4.6	3.2	2.0	RTAD20-7F206
25'	3.1	1.4	—	—	—	RTAD25-6F206
25'	6.0	3.6	2.1	1.1	—	RTAD25-7F206
25'	7.1	6.2	4.2	2.8	1.6	RTAD25-8F206
30'	3.3	1.5	—	—	—	RTAD30-7F206
30'	6.0	3.6	2.1	0.9	—	RTAD30-8F206
30'	7.1	5.3	3.4	2.1	1.1	RTAD30-8D206
30'	7.1	7.1	6.0	4.1	2.8	RTAD30-8E206
35'	3.4	1.5	—	—	—	RTAD35-8F206
35'	5.3	2.9	1.5	—	—	RTAD35-8D206
35'	7.1	5.6	3.6	2.2	1.2	RTAD35-8E206
40'	2.9	1.1	—	—	—	RTAD40-8D206
40'	5.9	3.4	1.8	0.7	—	RTAD40-8E206

Maximum Fixture Weight 75 Lbs.

Dimensions and Specifications subject to change without notice.