**POLE SHAFT:**

Conforms to ASTM A595 and is supplied in 3, 5, 7, 10 and 11 gauge. The shaft can be one or two piece round in cross section having an approximate taper of .14 inches per foot of length

ANCHOR BASE:

Structural quality ASTM A36

ANCHOR BOLTS:

Carbon steel conforming to AASHTO M314 grade-55 or ASTM F1554 grade -55. Bolts are "L" shaped and are galvanized a minimum of 12" on the threaded end. Each pole includes four bolts, each with two nuts and two flat washers.

NUT COVERS (standard):

Zinc die cast held in place by a .25" stainless steel, self tapping hex head screw. An optional full base cover made of ABS plastic or steel is also available.

HANDHOLE:

A covered reinforced handhole is supplied either in 3" x 5" rectangular or 4" x 6.5" oval, depending on pole size.

HARDWARE:

All structural fasteners are galvanized high strength carbon steel. All other fasteners are galvanized or zinc plated or stainless steel.

STANDARD FINISH:

Galvanized or powder coated. Consult factory for standard or custom colors.

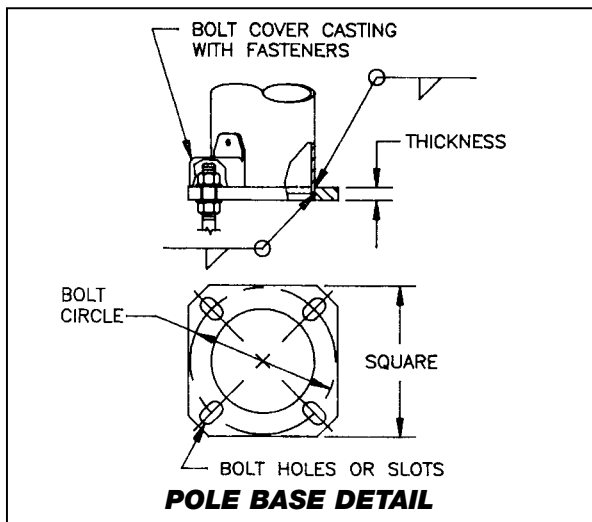
MOUNTINGS OPTIONS:

Tenons-standard 2 3/8" x 4" or 4" x 6" or removable pole caps used in conjunction with side mounted fixtures.

*Serving our customers and
the industry with quality
products since 1973.*

Round Tapered Steel Light Poles

POLE CATALOG NUMBER	NOMINAL MOUNTING HEIGHT (ft)	TOP O.D. INCHES	BASE O.D. INCHES	WALL THK. GAUGE	BASE PLATE SQUARE (IN)	BASE PLATE THK. (IN)	ANCHOR BOLTS (IN)	Max EPA AT: (Allows for 1.3 Gust Factor)		
								80 MPH	90 MPH	100 MPH
RTS20-3159C*	20	3.1	5.9	11	10.0	.88	1X36X4	19.3	15.1	12.2
RTS20-3765C	20	3.7	6.5	11	10.5	.88	1X36X4	24.2	19.3	15.6
RTS25-2459C*	25	2.4	5.9	11	10.0	.88	1X36X4	12.5	9.9	8.0
RTS25-3570C	25	3.5	7.0	11	10.88	.88	1X36X4	20.3	16.2	13.1
RTS25-3570D	25	3.5	7.0	7	10.88	1.0	1X36X4	30.5	24.0	19.8
RTS30-2466C	30	2.4	6.6	11	10.5	.88	1X36X4	11.7	9.3	7.5
RTS30-3880C	30	3.8	8.0	11	11.5	.88	1X36X4	18.9	14.9	12.0
RTS30-3880D	30	3.8	8.0	7	11.5	1.25	1.25X42X6	33.5	27.0	22.0
RTS35-2473C	35	2.4	7.3	11	11.25	.88	1X36X4	11.2	8.9	7.1
RTS35-3685C	35	3.6	8.5	11	12.0	1.0	1X36X4	18.9	15.1	12.2
RTS35-4695C	35	4.6	9.5	11	13.0	1.0	1X36X4	23.2	18.2	14.5
RTS39-2478C	39	2.4	7.8	11	11.5	.88	1X36X4	10.7	8.5	6.6
RTS39-3690C	39	3.6	9.0	11	12.38	1.0	1X36X4	17.2	13.5	10.8
RTS39-3690D	39	3.6	9.0	7	12.38	1.25	1.25X42X6	28.5	23.0	19.0
RTS45-3710C	45	3.7	10.0	11	14.0	1.0	1X36X4	17.4	13.5	10.6
RTS45-3710D	45	3.7	10.0	7	14.0	1.25	1.25X42X6	28.5	23.0	19.0
RTS45-4711D	45	4.7	11.0	7	16.5	1.50	1.25X42X6	35.7	28.0	22.3
RTS50-3010C	50	3.0	10.0	11	14.0	1.0	1X36X4	13.2	10.6	8.3
RTS50-3010D	50	3.0	10.0	7	14.0	1.25	1.25X42X6	20.5	16.5	13.6
RTS50-4011D	50	4.0	11.0	7	16.5	1.50	1.25X42X6	29.9	23.5	18.6
RTS50-6013D	50	6.0	13.0	7	18.0	1.50	1.5X54X6	50.4	39.7	31.4
RTS50-6013E	50	6.0	13.0	3	18.5	1.75	1.75X84X6	69.2	55.0	44.2
RTS55-3511DC	55	3.5	11.0	7 & 11	16.5	1.50	1.25X42X6	21.6	17.7	14.7
RTS55-4512DC	55	4.5	12.0	7 & 11	17.0	1.50	1.5X54X6	32.2	25.9	21.1
RTS55-52125ID	55	5.2	12.5	5 & 7	17.5	1.50	1.5X54X6	43.8	35.0	28.6
RTS60-4012DD	60	4.0	12.0	7 & 7	17.0	1.50	1.5X54X6	25.9	20.7	16.8
RTS60-4813DC	60	4.8	13.0	7 & 11	18.0	1.50	1.5X54X6	30.1	24.5	20.2
RTS60-45125ID	60	4.5	12.5	5 & 7	17.5	1.50	1.5X54X6	34.0	27.6	22.6
RTS65-4313DD	65	4.3	13.0	7 & 7	18.0	1.50	1.5X54X6	27.3	22.0	17.9
RTS65-4313ID	65	4.3	13.0	5 & 7	18.0	1.50	1.5X54X6	30.8	24.8	20.4
RTS70-3613DD	70	3.6	13.0	7 & 7	18.0	1.50	1.5X54X6	20.6	16.7	13.7
RTS70-3613ID	70	3.6	13.0	5 & 7	18.0	1.50	1.5X54X6	23.6	19.2	15.8



1. * 3" x 5" nominal hand hole – all others 4" x 6.5" nominal.

2. Design showing two shaft gauges indicates structure is provided as a two-piece, field assembled, unit. Heavier gauge is the bottom section.

3. Maximum weight and EPA values are based on top mounted luminaires and/or brackets having a centroid 2'-6" above the nominal mounting height.

Dimensions and Specifications subject to change without notice.